



Model 840S shown

Ez Pick

Skid-Steer Mounted Rock Picker

720 • 840 • 960

Owner's Manual and Parts Book
(Originating with Serial Number 08-1155)

Model Number: _____
Serial Number: _____
Date of Purchase: _____





LOFTNESS SPECIALIZED EQUIPMENT, INC.

LIMITED WARRANTY POLICY

The limited warranty policy begins upon delivery of the unit to the original customers.

The following Loftness products have a two (2) year limited warranty;

XLB10 Grain Bag Loader, Battle Ax L-series Skid Steer, Battle Ax S-series Skid Steer, Battle Ax H-series Skid Steer, Battle Ax Excavator 20-series, Battle Ax Excavator 30-series, Battle Ax Excavator 40-series, Battle Ax Excavator 50-series, Battle Ax Extreme, Bad Ax Skid Steer, Timber Ax Skid Steer, Stump Ax, BT20, Kwik Cut.

All other Loftness products have a one (1) year limited warranty.

If any Loftness product is used as rental or leased equipment the limited warranty period is for only 30 days from the delivery date to the original customers.

Loftness Specialized Equipment, hereinafter referred to as LOFTNESS, a manufacturer of quality machinery since 1956, warrants new LOFTNESS machinery and/or attachments at the time of delivery to the original purchaser, to be free from defects in material and workmanship when properly set up and operated in accordance with the recommendations set forth in the LOFTNESS Operator's Manual.

LOFTNESS' liability for any defect with respect to accepted goods shall be limited to repairing the goods at an authorized dealer or other LOFTNESS designated location, or replacing them as LOFTNESS shall elect. The above shall be in accordance with LOFTNESS warranty adjustment policies.

WARRANTY REQUIREMENTS

Warranty registration form must be filled out and returned to Loftness Specialized Equipment to validate all warranty claims.

To receive a warranty claim, a return authorization from LOFTNESS must be obtained. The failed part may then be returned in an untampered status. This warranty does not include freight or delivery charges incurred when returning machinery for servicing. Dealer mileage, service calls and pick-up/delivery charges are the customer's responsibility.

LIMITATIONS OF WARRANTY

LOFTNESS products are designed to provide years of dependable service when proper use and maintenance is adhered to. The potential for misuse in many applications exists; therefore, a limited warranty is provided as follows.

This warranty shall not apply to any machine or attachment which shall have been repaired or altered outside the LOFTNESS factory or authorized LOFTNESS dealership or in any way so as in LOFTNESS' judgment, to affect its stability or reliability, nor which has been subject to misuse, negligence or accident, nor to any machine or attachment which shall not have been operated in accordance with LOFTNESS' printed instructions or beyond the company recommended machine rated capacity. LOFTNESS may elect to have an area representative evaluate the condition of the machine before warranty is considered.

In addition, this limited warranty provides no coverage for general wear or maintenance items, misuse, environmental conditions and/or contamination for which they were not designed or not intended, including but not limited to the following items;

Use of machine beyond its rated capacity, Conveyors, Improper knife replacement, Auger wear, Missing knives, Saw blades, Striking foreign objects, Brakes and brake pads, Lack of lubrication, Tires, Failures caused by running in an "out-of-balance" condition, Hydraulic hoses damaged by being caught in "pinch points" or by moving parts, and Damage caused by excessive force from the power unit.

EXCLUSIONS OF WARRANTY

Except as otherwise expressly stated herein, LOFTNESS makes no representation or warranty of any kind, expressed or implied. **The implied warranty of merchantability and fitness for a particular purpose are excluded from this limited warranty.** The remedies set forth in this warranty are the only remedies available to any person under this warranty. LOFTNESS shall have no liability to any person for incidental, consequential or special damages of any description, whether arising out of express or implied warranty or any other contract, negligence, or other tort or otherwise. This exclusion of consequential, incidental and special damages is independent from and shall survive any finding that the exclusive remedy failed of its essential purpose. Upon purchase, the buyer assumes all liability, all personal injury and property damage resulting from the handling, possession or use of the goods by the buyer.

No agent, employee or representative of LOFTNESS has any authority to bind LOFTNESS to any affirmation, representation or warranty concerning its machinery and/or attachments except as specifically set forth herein. (August 2023)



Table of Contents

Warranty

Table of Contents

Ordering Code

Ordering Code	1
Ez Pick (Example).	1

Introduction

Owner Information	3
Warranty Policy	3
Serial Number Location	3
Manual Storage	3
Ez Pick Features	4

Safety Instructions

Safety First.	5
Owner's Responsibility	5
Mandatory Shut-Down Procedure	6
Safety Rules.	6
Operating Safety	6
Maintenance Safety	7
Hydraulic Safety.	8
Ez Pick Identification	9
Models 720 and 840	9
Model 960	9
Safety Decal Locations	10

Set-up Instructions

Connecting to Loader	11
Checking Reel	11
Hydraulic Connections.	11
Reel Speed.	11
Check Chain Tension	11

Operating Instructions

Operation.	13
Reel Operation.	13
Clearing Jams	13
Load Capacities.	13

Table of Contents

Maintenance

General Maintenance	15
Break-In Schedule	15
Maintenance Schedule	15
Lubrication	16
Grease Points Location	16
Opening Chain Guard Shield	17
Models 720 and 840	17
Models 960	17
Chain Adjustment - Models 720 and 840	18
Adjusting Chain Tension	18
Aligning Chain	18
Chain Adjustment - Models 960	19
Adjusting Chain Tension	19
Aligning Chain	19
Torquing Motor Bolts	19
Storage	20
End of Season	20
Beginning of the Season	20
Troubleshooting	21

Parts Identification

Ez Pick - Models 720 and 840	24
Hose Kit - (215749)	26
Ez Pick - Model 960A	28
Machine Decals and Signs	30

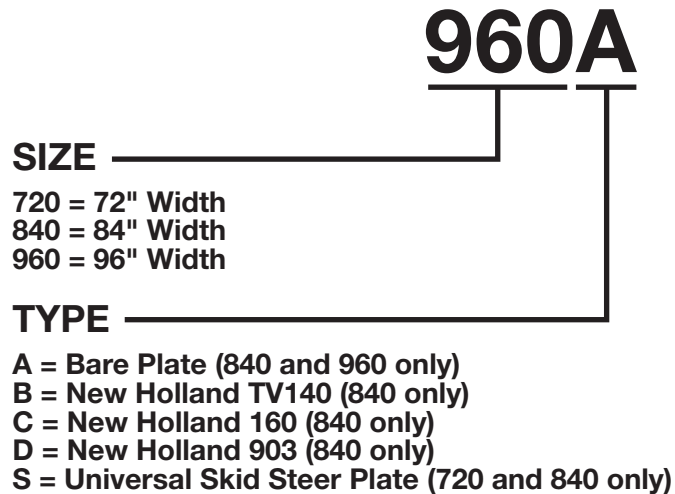
Appendix

Specifications	31
Dimensions	32
Models 720 and 840	32
Model 960	32
Torque Specifications	33
Inches Hardware and Lock Nuts	33
Metric Hardware and Lock Nuts	34

Ordering Code

Ez Pick (Example)

The ordering code will consist of three numbers (machine size) and one letter (machine type). An example for a Ez Pick of this type would be as shown below.





Owner Information

Thank you for your decision to purchase a Ez Pick loader mounted rock picker from Loftness Specialized Equipment, Inc. It has been designed to provide years of profitable and dependable service. To ensure maximum performance of your Ez Pick, it is mandatory that you thoroughly study the owner's manual and follow its recommendations. Proper operation and maintenance are essential to maintain and maximize the life of the machine and to prevent damage or injury.

NOTE: *This manual provides setup, operation, and maintenance instructions for three Loftness models - the 720, 840, and 960. The instructions provided apply to all models unless specified by model number.*

The Loftness Ez Pick is a hydraulic powered rock and debris picker designed to pick up and haul away loose rock or debris measuring from 2 inches to 24 inches in diameter. It is equipped with high carbon steel tines and a hydraulic powered reel that rotates 360 degrees.

NOTE: *Using the Ez Pick for anything other than its intended design (such as digging or ramming to dislodge large, partially buried objects) will void the warranty.*

Operate and maintain this machine in a safe manner and in accordance with all applicable local, state, and federal codes, regulations and/or laws, and in compliance with on-product labeling and these instructions.

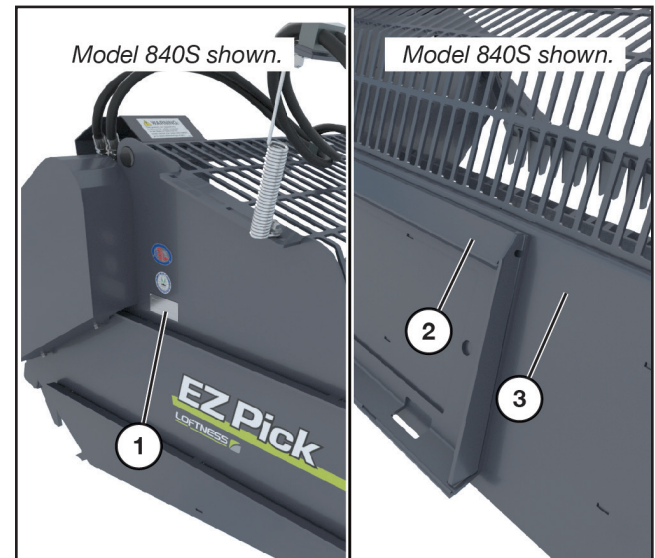
Make sure that all personnel have read this owner's manual and thoroughly understand safe and correct operating, installation and maintenance procedures.

Continuous improvement and advancement of Loftness products may result in changes to your equipment that may not be reflected in this publication. Loftness reserves the right to make product improvements to the machine at any time. Although great care has been taken to ensure the accuracy of this publication, Loftness does not assume any liability for errors or omissions.

Warranty Policy

Be sure to read and understand the Warranty Policy at the beginning of this manual. It is also important that you fill out the Warranty Registration form(s) completely with your dealer so as not to void the warranty.

Serial Number Location



The machine serial number is shown in the tag (1), and is also stamped into the mount (2).

NOTE: *If the Ez Pick is not equipped with mount, the serial number will be stamped into the machine frame (3).*

Always use your model and serial number when requesting information or when ordering parts.

Manual Storage

Keep the owner's manual and the entire machine documentation in a clean, dry place free from potential damage. The owner's manual must be available for all operators.

Introduction

Ez Pick Features

360-Degree Reel

- Bi-directional rotation
- Opens fully for dumping

Heavy-Duty Tines

- Solid 1 in. thick on 720 and 840 models; 1-1/2 in. thick on 960 model
- High carbon steel
- Picks up material from 2 in. to 24 in. in diameter

Power And Drive

- Hydraulic driven
- Requires only 6 GPM hydraulic flow
- No. 60 HD roller chain
- 1-3/4 in. bearings on 720 and 840 models; 2-3/16 in. bearings on 960 model

Body

- Three sizes: 72, 80, and 96 in. widths
- Heavy duty welds provide long-lasting durability
- Grated bottom with 2 in. openings
- Heavy duty rear screen for protection
- 1/4 in. side plates on 720; 1/4 in. on 840 model; 1/2 in. on 960 model

Backplate

- Reinforced frame
- 1/4 in. thick steel on 720; 5/16 in. on 840 model; 1/2 in. on 960 model

Mount

- All-welded construction

Construction

- Structural steel
- Precision welds
- Quality craftsmanship
- Durable finish

Safety First



Safety Alert Symbol

This message alert symbol identifies important safety messages on the machine and in the owner's manual. When you see this symbol, be alert to the possibility of personal injury and carefully read the message that follows.

In the owner's manual and on decals used on the machine the words **DANGER, WARNING, CAUTION, IMPORTANT, and NOTE** are used to indicate the following:

DANGER: This word warns of immediate hazards which, if not avoided, will result in severe personal injury or death. The color associated with Danger is RED.



WARNING: This word refers to a potentially hazardous situation which, if not avoided, could result in severe personal injury or death. The color associated with Warning is ORANGE.

CAUTION: This word refers to a potentially hazardous or unsafe situation that, if not avoided, may result in minor or moderate injury. It may also be used to alert against unsafe practices. The color associated with Caution is YELLOW.

IMPORTANT: Highlights information that must be heeded.

NOTE: A reminder of other related information that needs to be considered.

If Safety Decals on this machine are ISO two panel pictorial, decals are defined as follows:

- The first panel indicates the nature of the hazard.
- The second panel indicates the appropriate avoidance of the hazard.
- Background color is YELLOW.
- Prohibition symbols such as  and  if used, are RED.

Be certain all machine operators are aware of the dangers indicated by safety decals applied to the machine, and be certain they follow all safety decal instructions. Contact Loftness for safety decal replacement.

Loftness cannot anticipate every possible circumstance that may involve a potential hazard. The warnings in this owner's manual are not all inclusive.

Owner's Responsibility

Due to the potential danger of flying debris, it is the owner's responsibility and is **"ABSOLUTELY MANDATORY"** that **IMPACT-RESISTANT SHIELDING** be installed on the machine to protect the operator.

It is **ABSOLUTELY MANDATORY** that all personnel read and follow all safety precautions before operating the machine and attachment.

Make sure that all personnel have read this owner's manual, and thoroughly understand safe and correct installation, operation, and maintenance procedures.

Read your skid-loader safety manual carefully and become familiar with the controls and proper use of the machine. Know how to stop the unit by disengagement of the controls. See "Mandatory Shut-Down Procedure" on page 6.

Operate and maintain this machine in a safe manner and in accordance with all applicable local, state, and federal codes, regulations and/or laws; and in compliance with on-product labeling and this owner's manual instructions.

Make sure that all personnel know how to stop the machine and attachment by disengaging all controls. See "Mandatory Shut-Down Procedure" on page 6.

Make sure the attachment is set up and installed on the machine correctly before being placed in service. At regular intervals thereafter, the attachment should be serviced in accordance with procedures outlined in this owner's manual.

Fulfill all warranty obligations so as not to void the warranties. The warranty section at the beginning of this manual outlines the warranty policy of Loftness Specialized Equipment, Inc.

Safety Instructions

Owner's Responsibility (Cont'd)

Mandatory Shut-Down Procedure

- Stop hydraulic driven reel at its lowest point of travel.
- Lower Ez Pick to rest on the ground.
- Engage parking brake.
- Stop engine and remove ignition key.
- Release pressure in all hydraulic circuits.

Safety Rules

These are general safety considerations. Additional precautions may be necessary to operate your machine in a safe manner. Be certain you are operating your machine in accordance with all safety codes, OSHA rules and regulations, insurance requirements and local, state, and federal laws.

Failure to follow safety, operating and maintenance instructions could result in death or serious injury to the operator or bystanders, poor operation, and costly breakdown.

Operating Safety

- Do not start, operate, or work on this attachment until you have carefully read and thoroughly understand the contents of this manual, the operator's manual for your loader, and the EMI Skid-Loader Safety Manual provided with the Ez Pick.
- Read and observe all warnings decals on the machine before attempting to operate the attachment. Do not attempt to operate this attachment unless all factory devices and decals are in place. Keep safety decals clean of dirt and grime. Keep all guards, shields and decals in place.
- Become familiar with and know how to operate all safety devices and controls on the machine and attachment before attempting to operate. Know how to stop the machine and attachment before starting it.
- Do not allow anyone to operate the attachment until he or she has read the owner's manual and is completely familiar with all safety precautions and controls. Keep the work area clear of all unauthorized personnel.
- Because of the potential safety hazard to eyes from hydraulic leaks and/or flying debris, use of protective eyewear is absolutely mandatory for operator and others in the work area.
- Do not wear loose hanging clothes, neckties or jewelry around rotating parts. Long hair is to be placed under a cap or hat. These precautions will help prevent you from becoming caught in any moving parts on the machine and attachment.
- Do wear safety glasses, ear protection, respirators, gloves, hard hats, safety shoes and other protective clothing when required.
- Do not allow persons under the influence of alcohol, medications, or other drugs that can impair judgment or cause drowsiness to operate or maintain the machine.
- Never allow children to operate the equipment.
- Keep children, bystanders and other workers off and away from the machine and attachment during operation. No riders allowed.
- Use the handholds and step plates when getting on and off the machine to prevent falls. Keep steps and platform cleared of mud and debris.
- Always have an operator in the machine while the attachment is in operation. Never leave the machine and attachment running and unattended.
- Keep your feet on the pedals, (floor plates) seat belt fastened snugly and seat bar lowered, (if equipped), when operating the attachment.
- Before leaving the operator's position for ANY reason or allowing anyone to approach the machine and attachment, always perform the mandatory shutdown procedure.
- Keep hands and feet clear! Never step over or climb over the attachment while the engine is running; entanglement could occur.
- Disengage auxiliary hydraulics and place all machine controls in neutral and engage the parking brake before starting the engine.
- Never dump over a post or any obstruction that could enter the operator's cab if the loader accidentally tips forward, causing serious injury or death.

Safety Rules (Cont'd)

Operating Safety (Cont'd)

- When considering safe lift limits, remember to combine the additional weight of your Ez Pick plus the weight of the payload you intend to carry. Refer to chart on page 13 for load capacities.
- Do not exceed rated capacity for your model of loader. Refer to your loader's operator manual for safe lift capacities. Load, unload and turn on flat level ground. Failure to obey warnings can cause the machine to tip or roll over and cause injury of death.
- Never operate the Ez Pick in a lifted position. Work only on the surface that the loader is standing on.
- Locking-wedge pins must extend through the holes in attachment mounting plate. Levers must be fully down in the locked over-center position. Failure to secure wedge pins can allow attachment to come off, causing serious injury of death.
- Do not modify equipment or add attachments that are not approved by the manufacturer.
- Do not replace components or parts with other than factory-recommended service parts. To do so may decrease the effectiveness of the machine.
- Periodically check all guards, shields and structural members. Replace or repair anything that could cause a potential hazard. Make certain that all guards are in place when operating the machine and attachment.
- Always use an approved roll bar and seat belt for safe operation. Overturning a machine without a roll bar and seat belt can result in injury or death.
- Know the area before operating the machine. Be aware of power lines or other equipment. Identify any possible underground hazards such as buried cables.
- Never operate the attachment without adequate light and visibility.

Maintenance Safety

- Do not work on this attachment until you have carefully read and thoroughly understand the contents of this manual, the operator's manual for your loader, and the EMI Skid-Loader Safety Manual provided with the Ez Pick.
- Before inspecting, cleaning, lubricating, adjusting or servicing any part of the attachment, always exercise the Mandatory Shut-Down Procedure. See "Mandatory Shut-Down Procedure" on page 6. After service has been performed, be sure to restore all guards, shields and covers to their original position.
- Never attempt to lubricate, or make any adjustments while the skid-steer or attachment is running, or the key is in the "ON" position in the machine. Before leaving the operator's position, disengage power to the attachment, shut off engine and remove ignition key.
- Before working under the attachment, be certain it is securely blocked!
- Do not smoke while servicing the machine.
- When performing any maintenance, make sure the area is clear of any distracting objects. Keep work areas clean and free of grease and oil to avoid slipping or falling.
- Do not touch loader or any attachment parts which might be hot from operation. Allow such parts to cool before attempting to maintain, adjust or service.

Safety Instructions

Safety Rules (Cont'd)

Hydraulic Safety

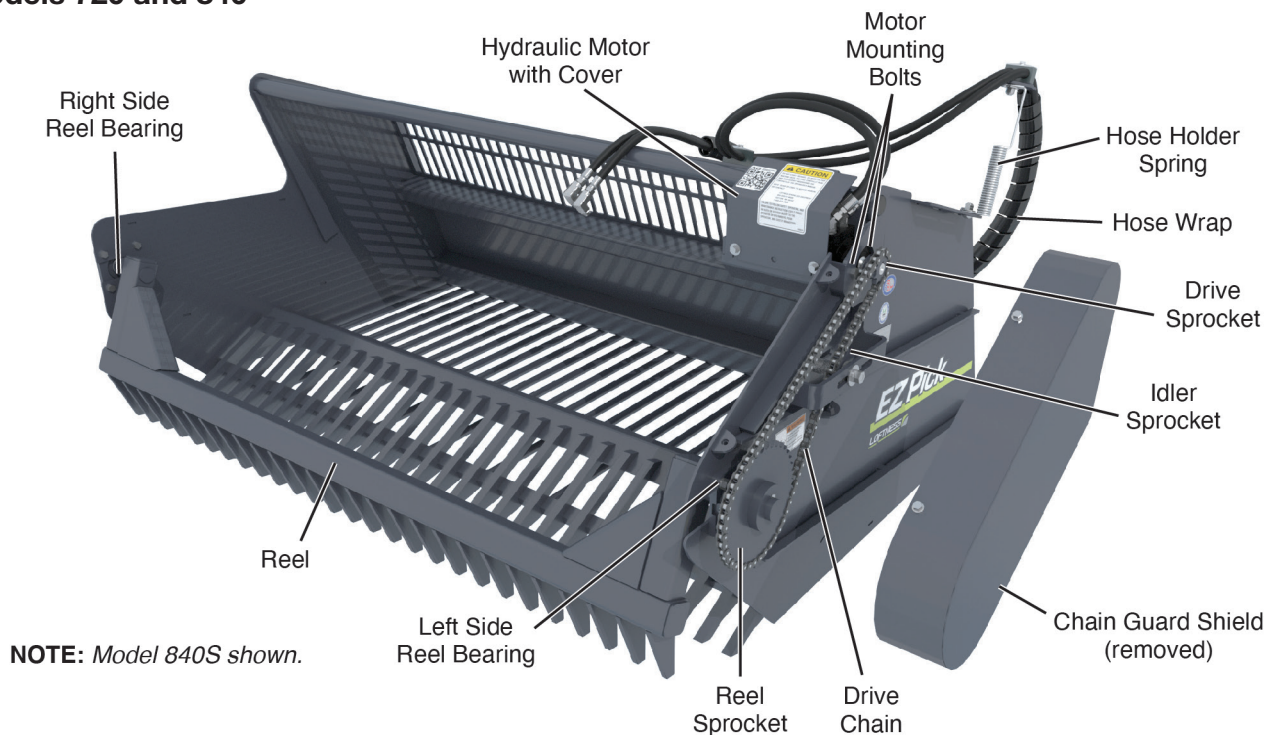


WARNING: *Contact with high pressure fluids may cause fluid penetration and burn hazards. Fluid that is under pressure can penetrate body tissue. Fluid penetration can cause serious injury and possible death. If fluid is injected into the skin, seek medical attention immediately!*

- Always wear safety goggles or glasses when working on hydraulic system to avoid eye injury.
- The hydraulic system is under high pressure. Make sure all lines and fittings are tight and in good condition. These fluids escaping under high pressure can have sufficient force to penetrate skin and cause serious injury.
- Never check for leaks by using any part of your body to feel for escaping fluid.
- Hydraulic system can contain stored energy or pressure if the reel becomes jammed or stuck. This energy could be released when working on the machine, causing serious injury or death. If you need to manually remove an obstruction from the machine, be sure to use the “Mandatory Shut-Down Procedure” discussed on page 6 and release all pressure from the hydraulic lines before attempting to work on the machine.
- To prevent serious personal injury from escaping high pressure fluid, never attempt to inspect, service or disassemble any part of the hydraulic system until all pressure has been relieved from the system.

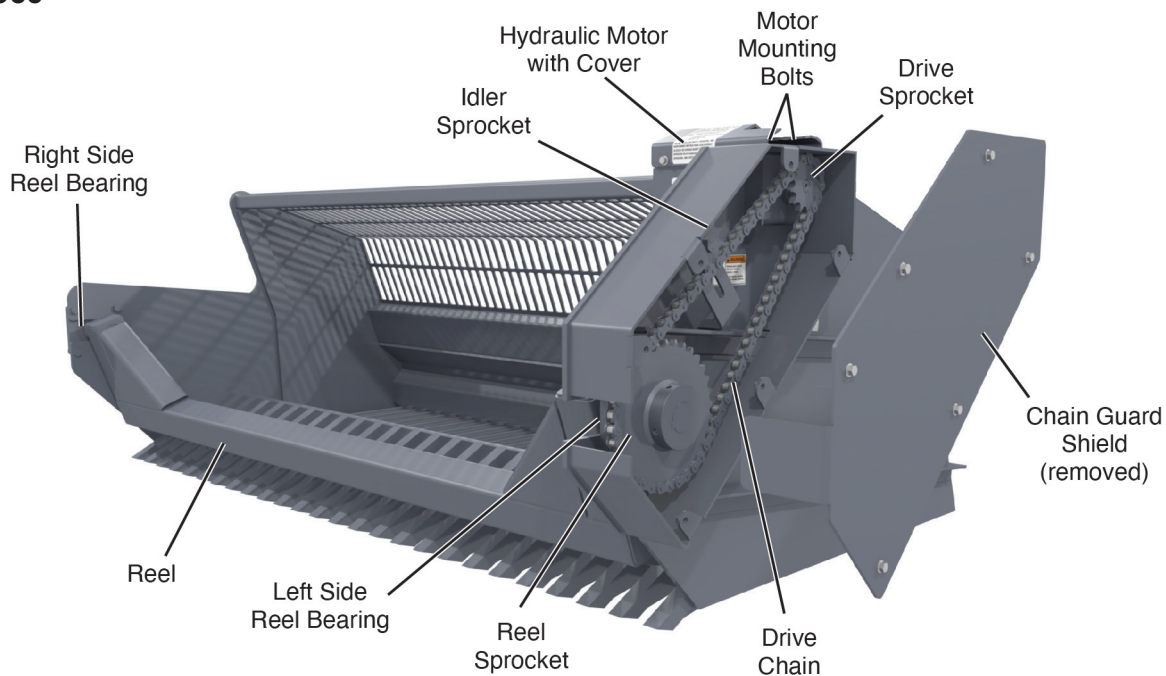
Ez Pick Identification

Models 720 and 840



NOTE: Hose kit 215749 is included in the Ez Pick 720S and 840S models with the universal skid-steer mount. It is not included on 840 and 960 models with other mounts.

Model 960



Safety Instructions

Safety Decal Locations

Check and replace any worn, torn, hard to read or missing safety decals on your machine.

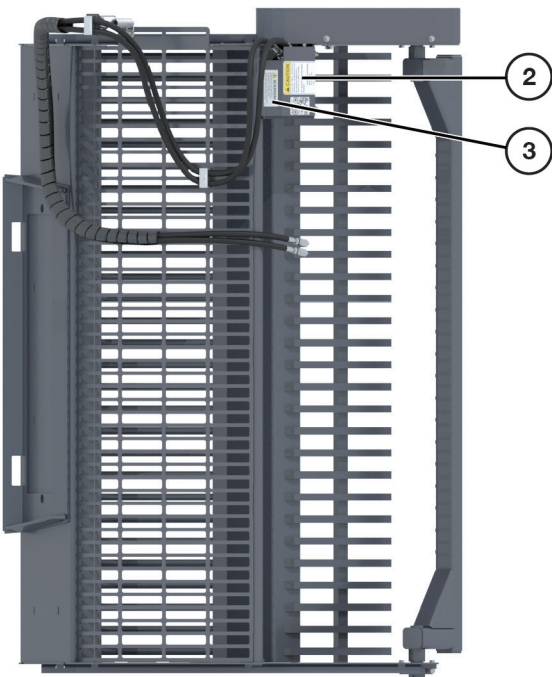
NOTE: This section shows where safety-related decals are applied on the machine. For all machine decals see “Machine Decals and Signs” on page 30.



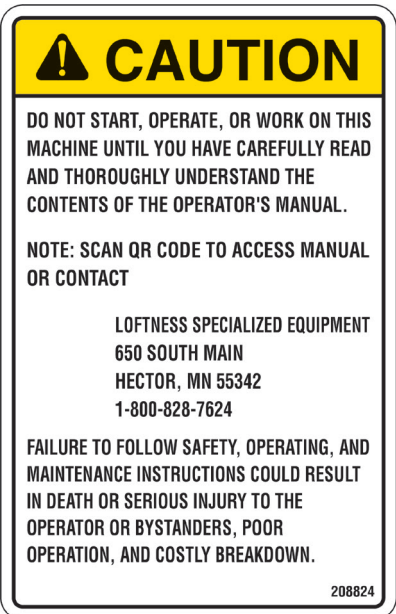
1



Part No. 4189



2



Part No. 208824



3



Part No. 203264

NOTE: Model 840S shown.

Connecting to Loader

To attach the Ez Pick to the loader using a universal mounting plate, proceed as follows:

1. Pull the attachment locking levers all the way up.
2. Tilt the loader mounting plate ahead, drive forward with the loader, and hook the top edge of the mounting plate under the flange on the Ez Pick mount. Care should be taken so as not to damage the locking levers on the loader mounting plate.
3. Tilt the loader mounting plate back until you feel the weight of the Ez Pick transfer to the loader tires, however, do not lift the attachment off the ground. Stop the engine.



WARNING: Before you leave the operator's seat, lower the lift arms, and put the attachment on the ground. Stop engine and remove ignition key. Engage the parking brake.

4. Push the locking levers down into the locked over-center position.



WARNING: Locking wedge pins must extend through the holes in the attachment mounting plate. Levers must be fully down in the locked and over center position. Failure to secure wedge pins can allow attachment to come off and cause injury or death.

5. Connect hydraulic quick couplers from the Ez Pick to the auxiliary hydraulic outlets on the loader. (A bi-directional auxiliary hydraulic outlet providing a minimum of 3-6 GPM at 2000 PSI is required).

NOTE: It is the owner's responsibility to provide two hoses (3,000 PSI hydraulic hose with 1/2 in. male NPTF fittings) of proper length for use on the loader. Hoses should be carefully routed across, and fastened to the protective screen to avoid getting pinched by moving parts. Be sure to provide enough extra hose length to provide maximum range of motion without damage to hoses. Route hoses down the back of the Ez Pick to a point even with the main bucket hinge and back up to the couplers on the loader boom.

Reverse procedure to unhook from the Ez Pick.

Checking Reel

Hydraulic Connections

Once the Ez Pick is attached to your loader and all hydraulic connections are made, test-run the reel to check for hydraulic leaks and reel speed.



WARNING: Hydraulic Lines. Protect hands and body from high pressure fluids. Pressurized fluids can penetrate the skin. Disconnect and lock out power source before disconnecting and/or connecting hydraulic hoses.

Reel Speed

Check the reel speed by operating reel forward with engine running at full throttle and carefully counting the RPM (revolutions per minute).

If the reel turns at more than 35 RPM with your loader, **DO NOT USE the Ez Pick.** Contact your Loftness dealer immediately. You will be provided with smaller orifices to correct the operating speed of the reel.

NOTE: Allowing reel to turn at more than 35 RPM will void the warranty.

Check Chain Tension

Before operating the Ez Pick, make sure the chain is properly tensioned. Refer to instructions for chain adjustment on pages 18 and 19 to safely check and adjust the chain tension for your specific Ez Pick model.



Operation

To maintain stability and visibility, carry the Ez Pick as low as possible at all times. If you must lift higher to dump, be certain that the combined weight of the Ez Pick plus the load within it does not exceed manufacturer's lifting capacity for your loader. Refer to "Load Capacities" on this page for information.

IMPORTANT: Do not use the Ez Pick to dig, or as a ram to dislodge large, partially buried objects. Damage that may result from this practice will void the warranty.

Reel Operation

IMPORTANT: The hydraulic driven reel is intended for intermittent use only. DO NOT operate it continuously. Continuous operation of reel may create unnecessary heat in the hydraulic system, causing premature component failure.

During normal operation, you'll want to place the reel in its highest position for best visibility when approaching rocks. Then, only operate reel one revolution at a time as the front tines of the Ez Pick are positioned under individual rocks.



WARNING: Do not try to load a difficult rock by forcing or beating the reel on the rock. Misuse of this kind could throw rock or debris through the air, becoming a serious safety hazard for the operator and others in the area, or cause costly damage to components on the machine.

Clearing Jams

The Ez Pick reel should sweep the rock into the bucket easily, if a rock is too heavy or becomes wedged between reel and tines, try one of the following techniques to dislodge it:

- Reposition tines under the rock further, then reactivate the reel.
- Using the reel to hold the rock, tilt the bucket lift cylinders back to improve angle, release pressure on the reel momentarily, then reactivate reel to sweep the rock into bucket.
- Roll the rock on the ground with tines to try a different position.



DANGER: Hydraulic systems can contain stored energy or pressure if the reel becomes jammed or stuck. If you need to manually remove an obstruction from the machine, be sure to use the "Mandatory Shut-Down Procedure" on page 6 and release all pressure from the hydraulic lines before attempting to work on the machine. This energy if not released, could be released when working on the machine, causing serious injury or death.

Load Capacities

When considering safe lift limits, remember to combine the additional weight of your Ez Pick plus the weight of the payload you intend to carry.

NOTE: This chart is intended to be used as an example only. All weights are estimates as actual weights of different types of rocks and other materials will vary greatly.

	Ez Pick Model	
	720	840
Capacity (cubic yards)	3/4	7/8
Added Weight (estimated lbs.)	700	975
Rock Weight (estimated lbs.)	2,100	2,450
Operating (estimated lbs.)	2,800	3,425

Capacity - Size of bucket.

Added Weight - Additional weight of Ez Pick over standard bucket.

Rock Weight - Estimated weight of full load of rocks.

Operating - Operating load capacity required.

NOTE: Use of rear counter weights is recommended for better traction and stability.



WARNING: Do not exceed rated capacity for your model of loader. Refer to your loader's operators manual for safe lift capacities. Load, unload and turn on flat level ground, failure to obey warnings can cause the machine to tip or roll over and cause injury or death.



General Maintenance

IMPORTANT: Refer to the “Operating Safety” on page 6 and “Maintenance Safety” on page 7 and become familiar with all safety rules before performing any maintenance or service on the Ez Pick.

To ensure efficient operation, you should inspect, lubricate, and make necessary adjustments and repairs at regular intervals. Parts that are starting to show wear should be ordered ahead of time, before a costly breakdown occurs and you have to wait for replacement parts. Keep good maintenance records, and adequately clean your Ez Pick after each use.

Proper lubrication is important. Too little lubricant will cause premature failure of a bearing. Too much lubrication usually causes high operating temperature and early failure of seals. Follow all lubrication instructions and schedules included in this section.

IMPORTANT: Do not use the Ez Pick to dig, or as a ram to dislodge large, partially buried objects. Damage that may result from this practice will void the warranty.

Break-In Schedule

Inspect and service after one (1) hour of operation all bolts, set screws on bearings, sprockets and motor mount. Also, check sprockets for alignment and the chain for proper tension (1 in. of deflection).

Regular maintenance should then be scheduled for every twenty five (25) hours of operation thereafter to insure the sprocket and chain maintains proper alignment, tension and is kept well lubricated. Bearings are greased, all bolts and set screws tight.

Maintenance Schedule

H O U R S	SERVICE POINTS	SERVICE REQUIRED					
		C H E C K	C L E A N	C H A N G E	G R E A S E	A D J U S T	O I L
Every 8	Machine		X				
	Loose Bolts	X				X	
	Hoses	X					
	Oil Leaks	X					
	Reel Bearing				X		
	Teeth	X					
Every 25	Chain Tension	X					
	Hydraulic Motor Bolts	X					
	Safety Labels	X					

Maintenance

Lubrication

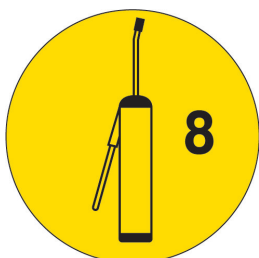
Grease Points Location

The operation and component lifetimes of this machine are dependent on regular and proper lubrication. The frequency of lubrication recommended is based on normal conditions. Severe or unusual conditions may determine actual service requirements.

Use a #2 general purpose lithium based grease unless noted otherwise.

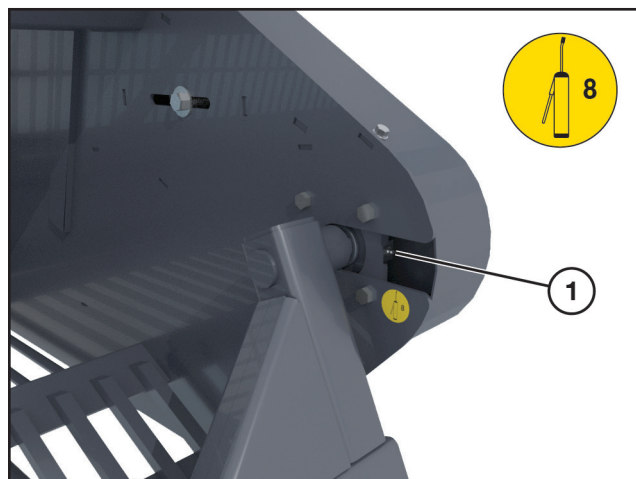
NOTE: Replace any broken or missing grease fittings. Be sure to clean fittings before greasing.

NOTE: Reel bearings cannot be damaged by over-greasing. Grease bearings until a small amount of grease is purged from the bearing.



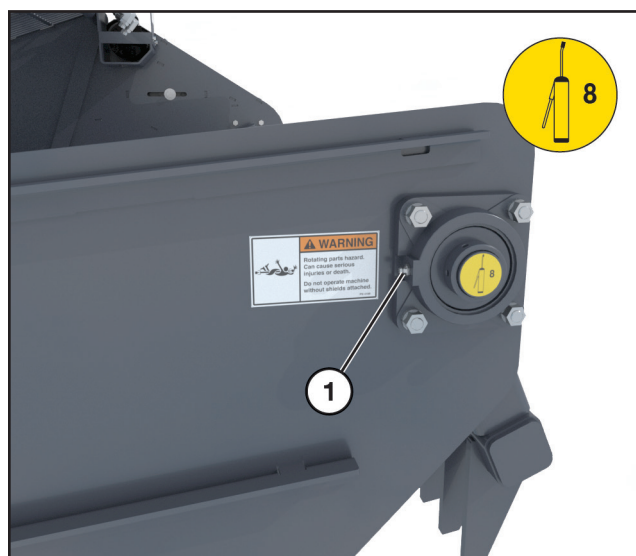
NOTE: Grease point decals as shown above are placed on the machine near all grease zerks.

See “Ez Pick Identification” on page 9 to aid in component location and identification.



Location: Left end reel bearing (1).

Interval: Every 8 hours of operation.



Location: Right end reel bearing (1).

Interval: Every 8 hours of operation.

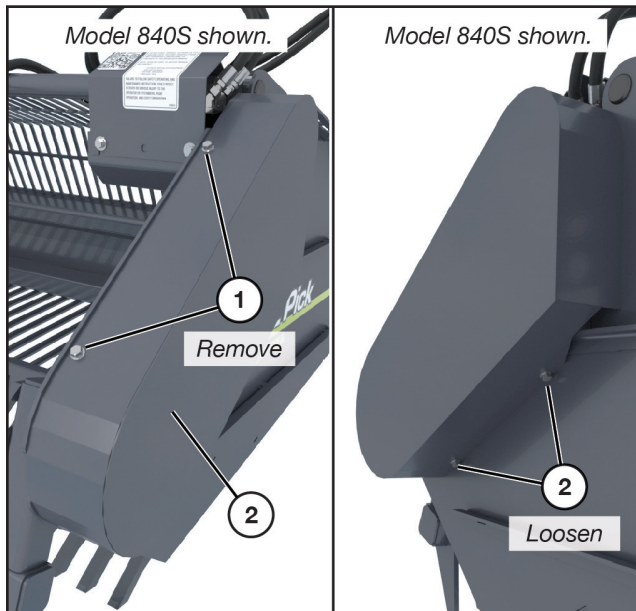
Opening Chain Guard Shield

Disconnect or turn off all power to the Ez Pick.



DANGER: Failure to turn off power to the Ez Pick before opening the end cover could result in serious injury or death.

Models 720 and 840



Remove the two bolts (1) on top of the cover (2).

Loosen the two bolts (3) on the underside of the cover, and slide the cover off.

Models 960



Remove the six bolts (1) and carefully lift and remove the shield.

Maintenance

Chain Adjustment - Models 720 and 840

NOTE: The instructions in this section are for adjusting the chain on the 720 and 840 models. For instructions on adjusting the chain for 960 models, see "Chain Adjustment - Models 960" on page 19.

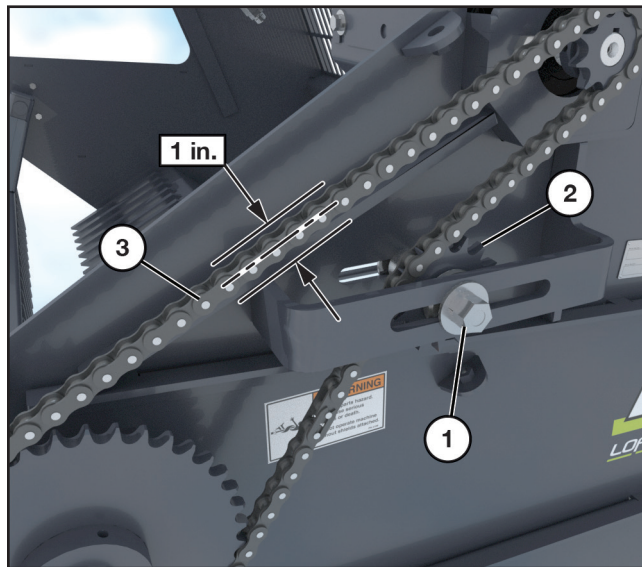
To adjust or align the chain, first open the chain guard shield following the instructions "Opening Chain Guard Shield" on page 17.



DANGER: Failure to turn off power to the Ez Pick before adjusting or aligning the chain could result in serious injury or death.

Adjusting Chain Tension

IMPORTANT: The chain must be properly tensioned after one hour of operation, and every twenty-five (25) hours thereafter.



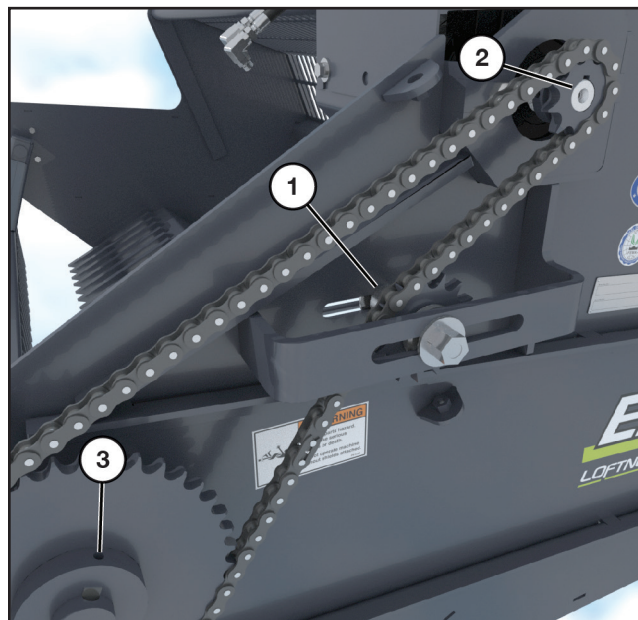
Loosen nut (1).

Slide sprocket assembly (2) forward or back to achieve proper tension on the chain. There should be 1 in. deflection in the chain (3) when pressure is applied at the midpoint.

IMPORTANT: Do not overtighten chain.

Retighten nut once proper tension has been attained.

Aligning Chain



To align the chain, add or remove spacers in sprocket assembly (1) to keep chain in alignment.

Loosen set screws (2) in drive sprocket, and set screws (3) in reel sprocket. Align sprocket assemblies on shaft so chain aligns on all sprockets.

Chain Adjustment - Models 960

NOTE: The instructions in this section are for adjusting the chain on the 960 model. For instructions on adjusting the chain for the 720 and 840 models, see “Chain Adjustment - Models 720 and 840” on page 18.

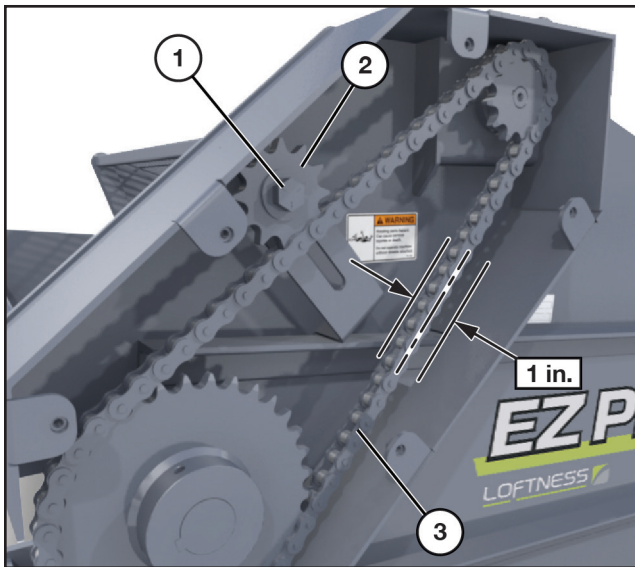
To adjust or align the chain, first open the chain guard shield following the instructions “Opening Chain Guard Shield” on page 17.



DANGER: Failure to turn off power to the Ez Pick before adjusting or aligning the chain could result in serious injury or death.

Adjusting Chain Tension

IMPORTANT: The chain must be properly tensioned after one hour of operation, and every twenty-five (25) hours thereafter.



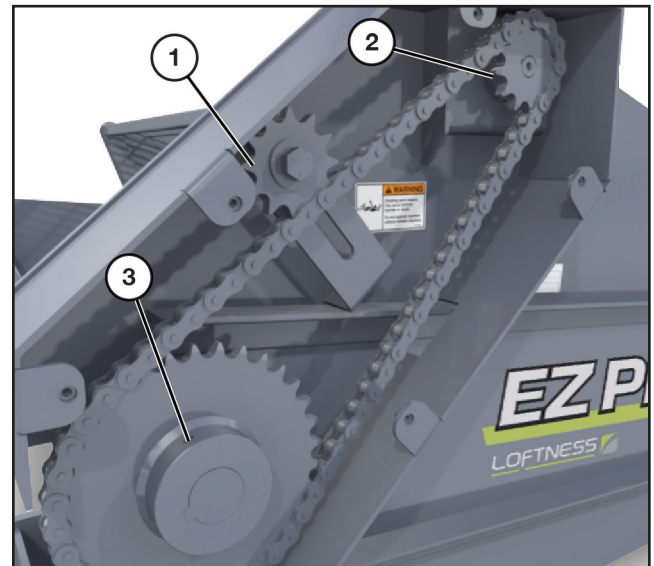
Loosen bolt (1).

Slide sprocket assembly (2) up or down to achieve proper tension on the chain. There should be 1 in. deflection in the chain (3) when pressure is applied at the midpoint.

IMPORTANT: Do not overtighten chain.

Retighten nut once proper tension has been attained.

Aligning Chain



To align the chain, add or remove spacers in sprocket assembly (1) to keep chain in alignment.

Loosen set screws (2) in drive sprocket, and set screws (3) in reel sprocket. Align sprocket assemblies on shaft so chain aligns on all sprockets.

Torquing Motor Bolts

To avoid damage to the Ez Pick, make sure the hydraulic motor bolts are torqued after one (1) hour of operation and every twenty-five (25) hours thereafter. Refer to “Ez Pick Identification” on page 9 for location. See also “Torque Specifications” on page 33 when tightening the motor mounting bolts.

Maintenance

Storage

Storage at the end of the rock picking season or between each use, requires an inspection of the Ez Pick for repairs and general upkeep to insure it will be ready for future use.

End of Season

- The reel must be stopped and stored in the lowest position.



DANGER: *If the reel is left in any raised position, it could suddenly swing down without warning causing serious injury or death.*

- Clean entire Ez Pick thoroughly, including inside of hydraulic motor mounting box. Keep the drain holes in bottom of the box clean and free from debris.
- Clean chain and sprockets, relax the chain tension. See instructions for chain adjustment on pages 18 and 19.
- Lubricate all parts of the machine. See “Lubrication” on page 16.
- Make a list of all worn or damaged parts and replace them.
- Paint all parts that are worn or rusted.
- Store Ez Pick in a clean, dry area.
- Review the Ez Pick operator’s manual.
- Secure hydraulic hoses.

Beginning of the Season

- Review the Ez Pick operator’s manual.
- Lubricate all parts of the machine. See “Lubrication” on page 16.
- Tighten all bolts, nuts, and set screws. See “Torque Specifications” on page 33.
- Adjust chain tension. See instructions for chain adjustment on pages 18 and 19.
- Replace all damaged, worn or missing decals.
- Install the Ez Pick on a loader and test for proper operation.

Troubleshooting

PROBLEM	CAUSE	SOLUTION
Reel Does Not Turn	Bearing malfunction.	Check and replace.
	Chain damaged or slipping.	Adjust tension or replace.
	Hydraulic motor malfunction.	If the motor is determined to be faulty while the machine is still under warranty, DO NOT open the gearbox.



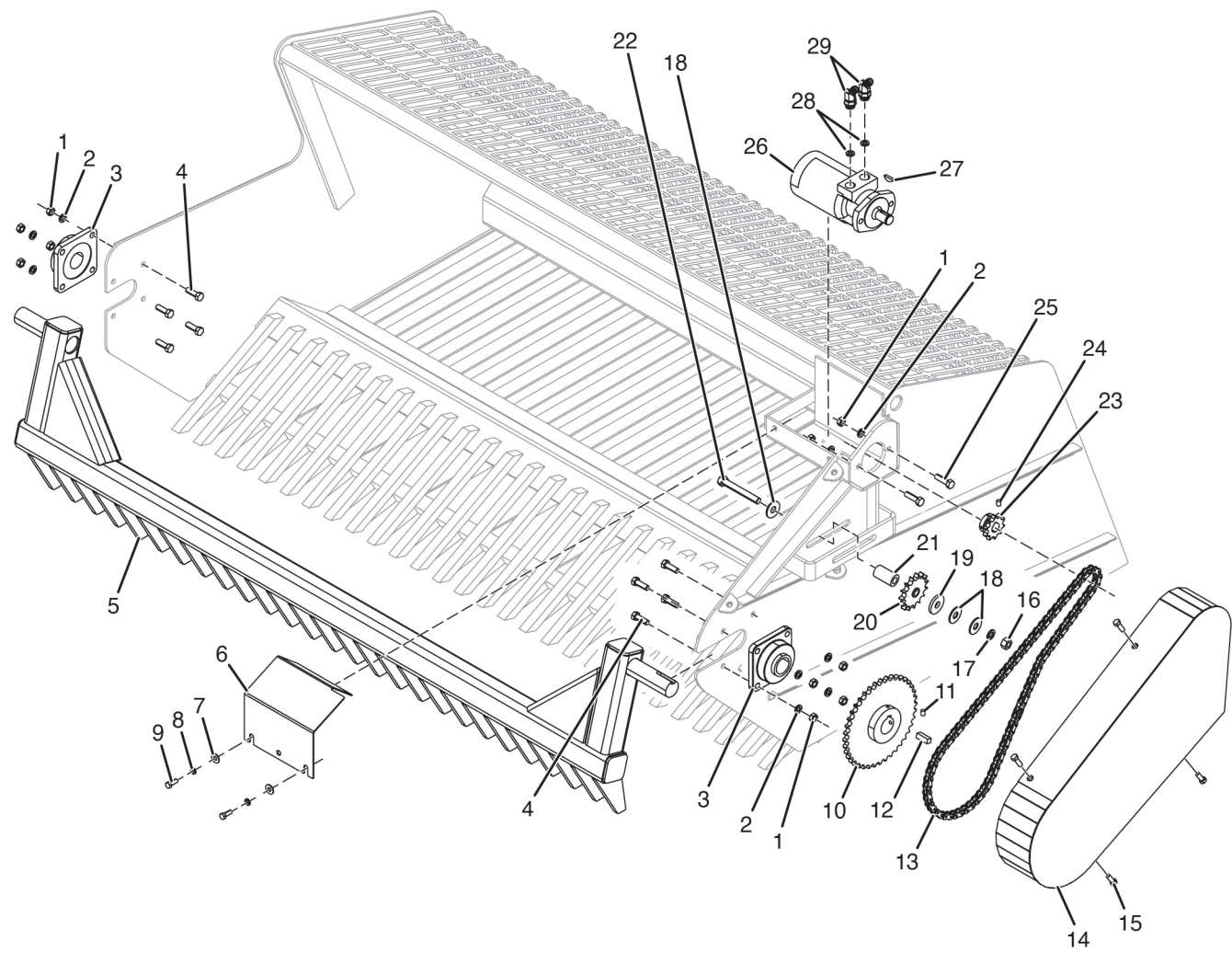


Model 840S shown

PARTS IDENTIFICATION

Parts Identification

Ez Pick - Models 720 and 840



Parts Identification

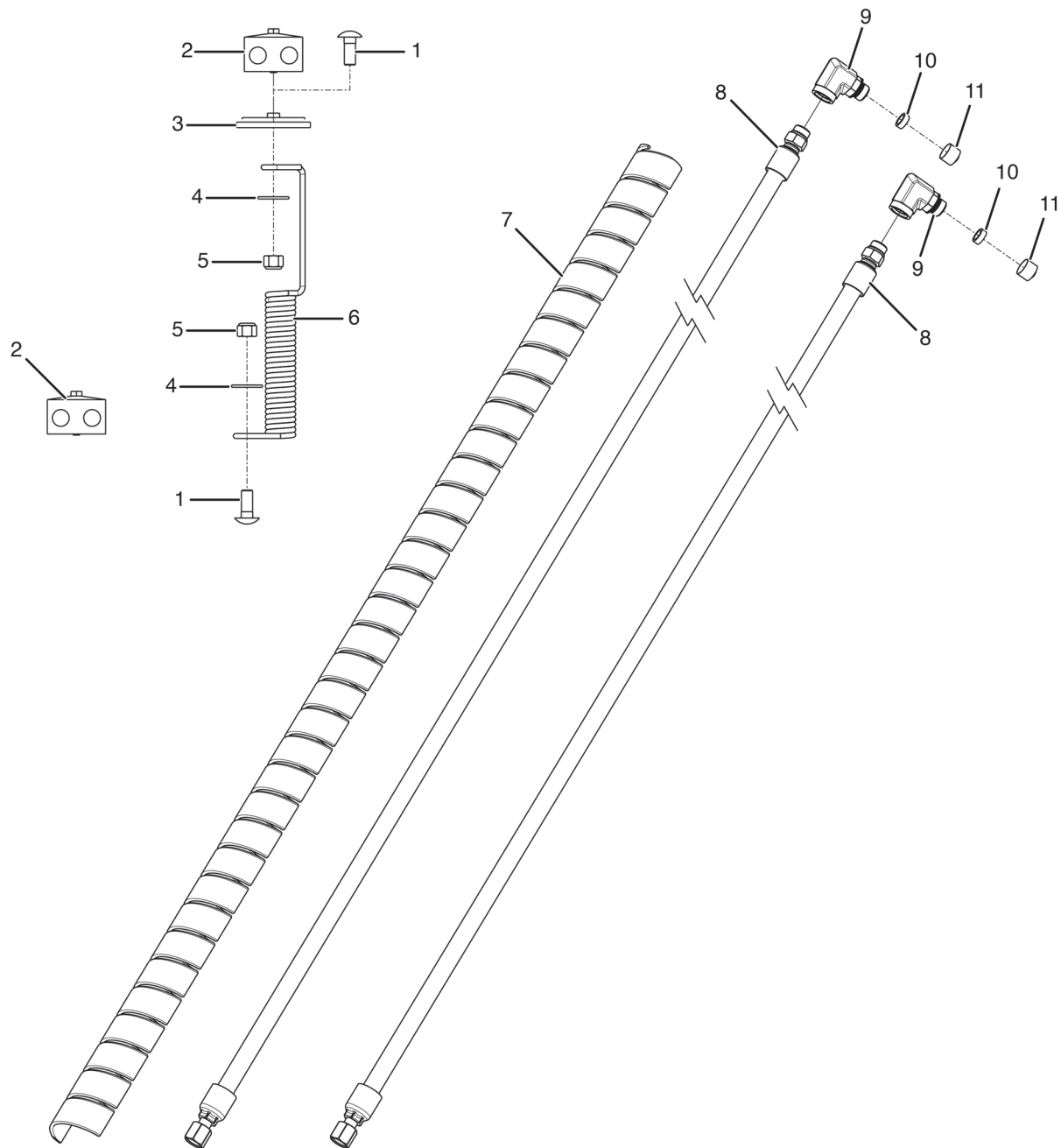
Ez Pick - Models 720 and 840

#	QTY.	PART #	DESCRIPTION
1	10	4250	NUT, STD 1/2"
2	10	4155	WASHER, LOCK 1/2"
3	2	8087	BEARING, 1-3/4IN DODGE 4-BLT FL
4	8	4013	BOLT, 1/2" X 1-1/2" GRADE 5
5	1	N12512	REEL, 72 FL TOOTH 1/2 KEY
		N12513	REEL, 84 FL TOOTH 1/2 KEY
6	1	209322	SHIELD, PARK MTR W/DEC
7	2	4064	WASHER, FLAT 3/8"
8	2	4065	WASHER, LOCK 3/8
9	2	4195	BOLT, 3/8" X 1" GRADE 5
10	1	N12490	SPROCKET, 60B40 W/1/2" KEYWAY
11	1	4354	SCREW, SET 3/8" X 3/8"
12	1	7122-03	KEY, 1/2" X 1-1/2"
13	1	8234-50	CHAIN, #60 HVY 62-3/4" LG TW
14	1	215745	SHIELD, CHAIN GUARD
15	2	N26743	BOLT, 3/8" X 1" SER FLG
16	1	4058	NUT, STD 5/8"
17	1	4070	WASHER, LOCK 5/8"
18	3	4069	WASHER, FLAT 5/8"
19	1	4062	WASHER, 2" OD X 11/16" ID X 1/4" THK
20	1	8229	SPROCKET, IDLER (CA60 CHAIN)
21	1	215702	BUSHING, 1.250OD X .688ID X 2.188
22	1	4296	BOLT, 5/8" X 4-3/4" GRADE 5
23	1	8319	SPROCKET, 60B10
24	1	4251	SCREW, 5/16" X 1" SET
25	2	4014	BOLT, 1/2" X 1-3/4" GRADE 5
26	1	N12433	MOTOR, HYDRAULIC (PARKER #180602BBBC)
27	1	7187-01	KEY, 1/4" WOODRUFF (#808 - INCLUDED W/N12433)
28	2	205071	ORIFICE, WORK PORT PLATE .0995
29	2	N21381	ELBOW, 45 DEG - 8MJIC - 10MOR

Parts Identification

Hose Kit - (215749)

NOTE: Hose kit 215749 is included in the Ez Pick 720S and 840S models with the universal skid-steer mount. It is not included on 840 and 960 models with other mounts.



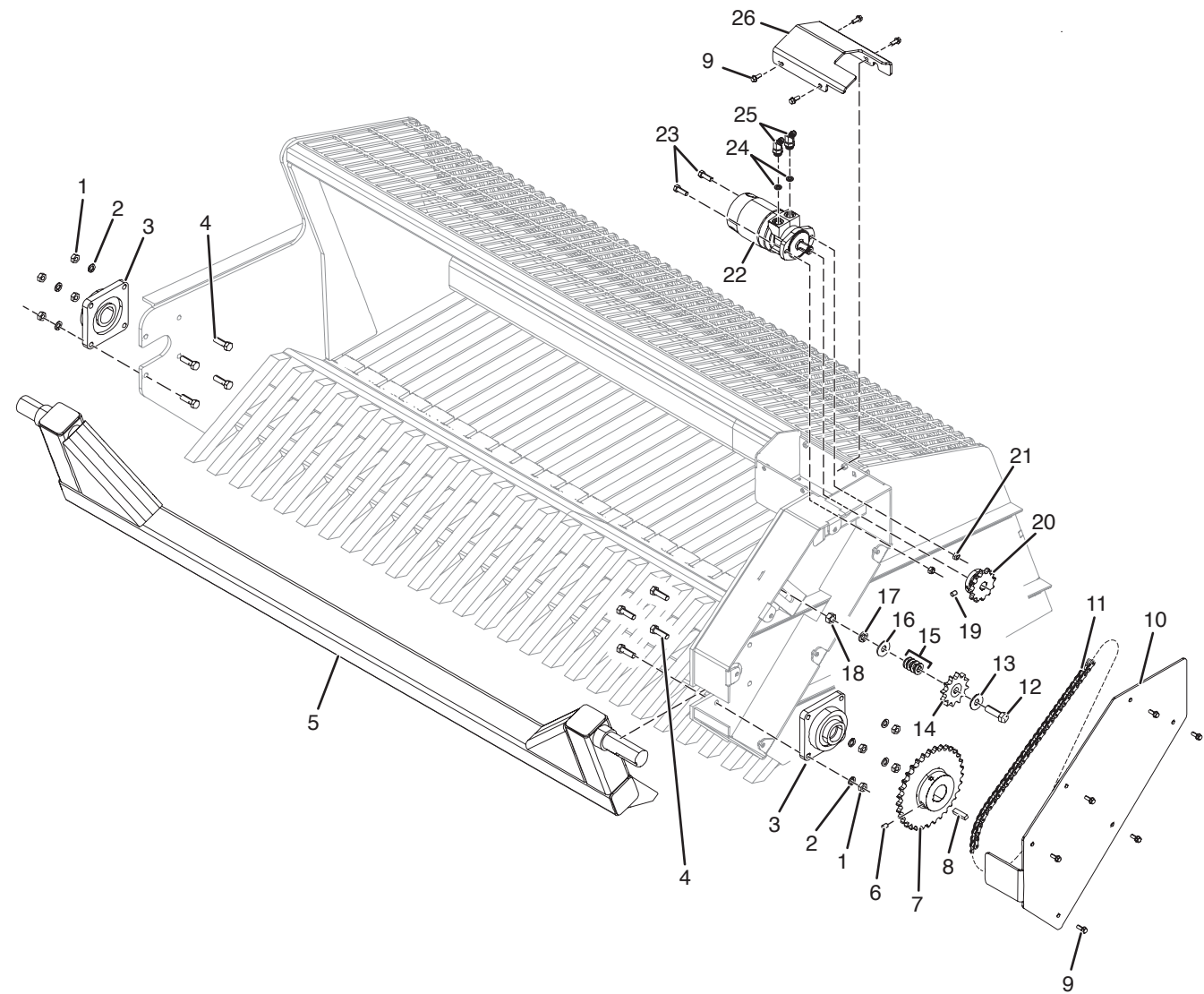
Hose Kit - (215749)

#	QTY.	PART #	DESCRIPTION
1	2	4038	BOLT, CARRIAGE 1/2" X 1-1/4"
2	2	N13383	CLAMP, DBL. 1/2" SUPP. HOSE
3	1	215768	WELDMENT, HOSE HOLDER
4	2	4486	WASHER, 1/2" FLAT
5	2	N149702	NUT, LOCK 1/2-13 NYLOCK
6	1	215145	SPRING, HYDRAULIC HOSE HOLDER
7	1	215543	WRAP, HOSE BLACK 53
8	2	215750	HOSE, 1/2 X 132 -8MOR -8FJIC
9	2	N34026	ELBOW, 90DEG 8MOR - 8FOR
10	2	N32002	PLUG, 3/8 SCH 40 X .25
11	2	N15895	CAP, 1/2 ALUMINUM HOSE

NOTE: Hose kit 215749 is included in the Ez Pick 720S and 840S models with the universal skid-steer mount.
It is not included on 840 and 960 models with other mounts.

Parts Identification

Ez Pick - Model 960A



Parts Identification

Ez Pick - Model 960A

#	QTY.	PART #	DESCRIPTION
1	8	4058	NUT, STANDARD 5/8"
2	8	4070	WASHER, LOCK 5/8"
3	2	N16969	BEARING, 2-3/16" 4-BOLT FLG SEALMASTER
4	8	4022	BOLT, 5/8" X 2" GRADE 5
5	1	N49123	REEL, 96" FLAT TOOTH
6	2	4572	SCREW, 1/2" X 1/2" LG ALN HD SET
7	1	N49160	SPROCKET, 80B33 WITH 5/8" KEY
8	1	7122-04	KEY, 1/2" X 2"
9	10	N26743	BOLT, 3/8" X 1" SER FLG
10	1	N49166	PLATE, 96 CHAIN COVER
11	1	N49161	CHAIN, #80 71"
	1	N29998	LINK, MASTER
12	1	4224	BOLT, 3/4" X 2-1/2" GRADE 5
13	2	4071	WASHER, 3/4" FLAT
14	1	8230	SPROCKET, IDLER G1-80 CHAIN
15	4	N35327	WASHER, FLAT 3/4" SAE
16	1	4071	WASHER, 3/4" FLAT
17	1	4287	WASHER, 3/4" LOCK
18	1	4288	NUT, 3/4" STANDARD
19	2	N22249	SCREW, 5/16" X 3/8" SOCKET HEAD
20	1	N49159	SPROCKET, 80B12F-1HT
21	2	4054	NUT, LOCK 1/2" TOP
22	1	N49158	MOTOR, PARKER 24.7 CUB IN
23	2	4013	BOLT, 1/2" X 1-1/2" GRADE 5
24	2	205071	ORIFICE, WORK PORT PLATE .0995
25	2	N21381	ELBOW, 45 DEG - 8MJIC - 10MOR
26	1	209323	SHIELD, 96 PARK MTR W/DEC

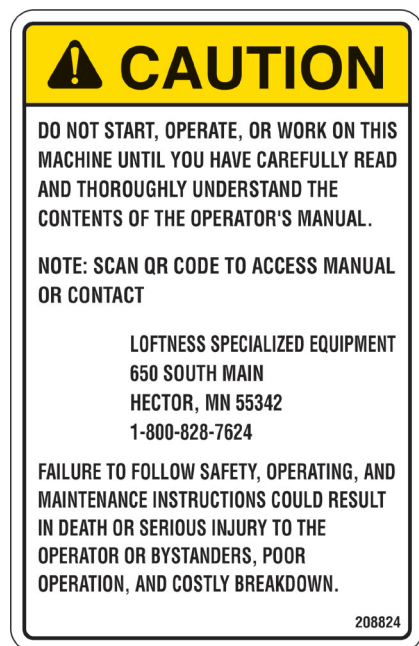
Parts Identification

Machine Decals and Signs

NOTE: All safety related decals are also shown in the Safety Instructions Section along with their location on the machine. See "Safety Decal Locations" on page 10.

Check and replace any worn, torn, hard to read or missing decals on your machine.

Part No. 208824



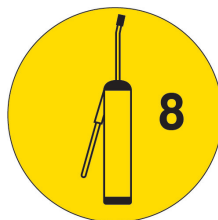
Part No. 4189



Part No. 203264



Part No. N28010



Part No. 209528



Part No. N13721



Part No. N13517



Part No. 4138



Part No. 209826



Part No. 209827



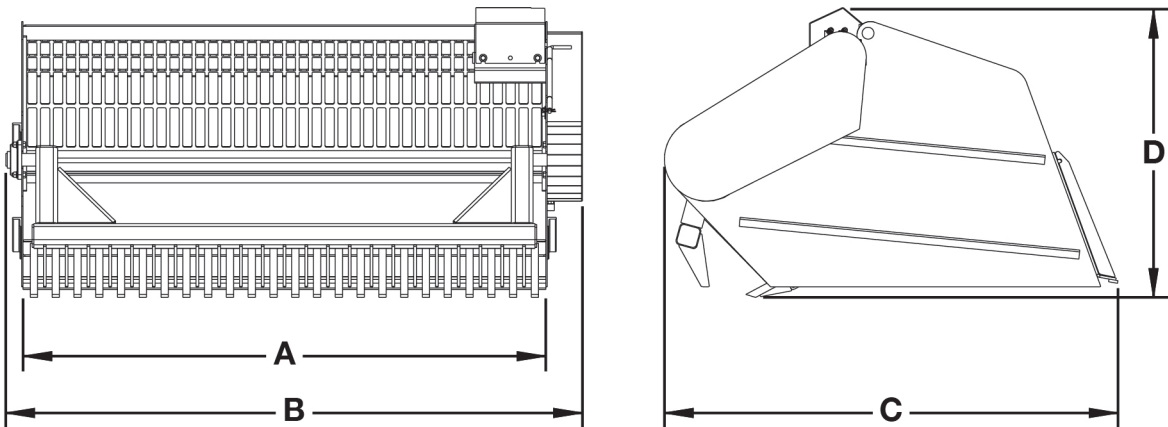
Specifications

DESCRIPTION	Ez Pick Model		
	720	840	960
Capacity (Cubic Yards)	3/4	1	1.25
Opening Width	72 in. (182.8 cm)	84 in. (213.4 cm)	96 in. (243.8 cm)
Opening Height	24 in. (60.96 cm)		
Weight	1,150 Lbs. (521.6 kg)	1,426 Lbs. (646.8 kg)	2,886 Lbs. (1,309.0 kg)
Crated Weight	1,480 Lbs. (671.3 kg)	1,756 Lbs. (796.5 kg)	3,216 Lbs. (1458.7kg)
Skid Steer Lifting Capacity	2,700 Lbs. (1224.7 kg)	New Holland Bi- Directional	N/A
Motor	Parker 17.1 cu. in.		Parker 24.7 cu. in.
Reel Bearing	1-3/4 in. 4-Bolt Flange		2-3/16 in. 4-Bolt Flange
Chain	#60 Heavy		#80 Heavy
Mount	Universal Skid Type (optional)		Bare Plate
Reel	Bi-Directional Rotation		
Tines	Solid 1 in. High-Carbon Steel		Solid 1-1/2-in. High-Carbon Steel

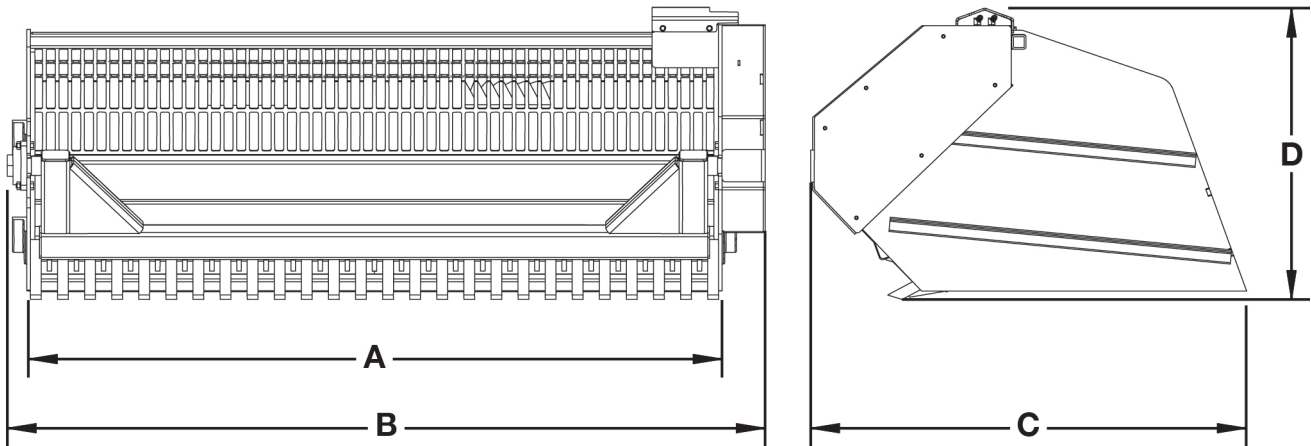
Appendix

Dimensions

Models 720 and 840



Model 960



DESCRIPTION	Ez Pick Model		
	720	840	960
Opening Width (A)	72.0 in. (182.9 cm)	84.0 in. (213.4 cm)	96.0 in. (243.8 cm)
Overall Width (B)	79.4 in. (201.7 cm)	91.5 in. (232.4 cm)	105.7 in. (268.5 cm)
Depth (C)	62.4 in. (158.6 cm)	62.4 in. (158.6 cm)	60.7 in. (154.2 cm)
Height (D)	39.7 in. (100.8 cm)	39.7 in. (100.8 cm)	40.7 in. (103.4 cm)

Torque Specifications

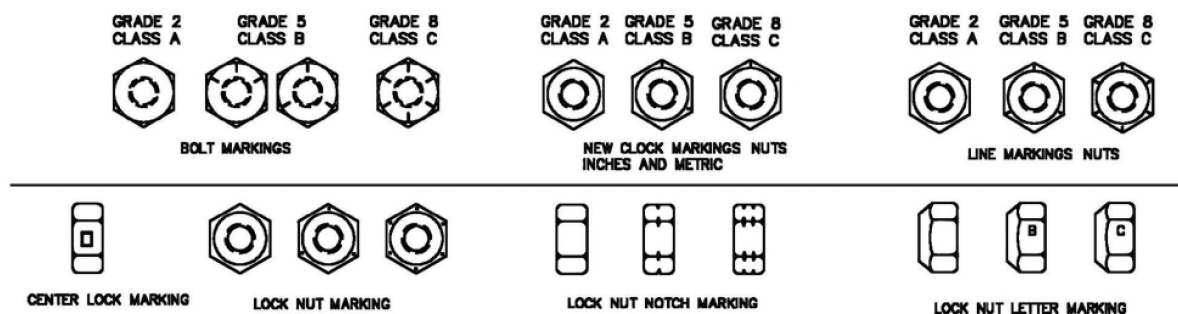
Inches Hardware and Lock Nuts

TORQUE CHARTS

Minimum Hardware Tightening Torques

Normal Assembly Applications
(Standard Hardware and Lock Nuts)

SAE Gr. 2	SAE Grade 5		SAE Grade 8		LOCK NUTS			
Nominal Size	Unplated or Plated Silver	Plated W / ZnCr Gold	Unplated or Plated Silver	Plated W / ZnCr Gold	Unplated or Plated Silver	Plated W / ZnCr Gold	Grade W / Gr. 5 Bolt	Grade W / Gr. 8 Bolt
1/4	55 in.-lb. (6.2 N•m)	72 in.-lb. (8.1 N•m)	86 in.-lb. (9.7 N•m)	112 in.-lb. (12.6 N•m)	121 in.-lb. (13.6 N•m)	157 in.-lb. (17.7 N•m)	61 in.-lb. (6.9 N•m)	86 in.-lb. (9.8 N•m)
5/16	115 in.-lb. (13 N•m)	149 in.-lb. (17 N•m)	178 in.-lb. (20 N•m)	229 in.-lb. (26 N•m)	250 in.-lb. (28 N•m)	324 in.-lb. (37 N•m)	125 in.-lb. (14 N•m)	176 in.-lb. (20 N•m)
3/8	17 ft.-lb. (23 N•m)	22 ft.-lb. (30 N•m)	26 ft.-lb. (35 N•m)	34 ft.-lb. (46 N•m)	37 ft.-lb. (50 N•m)	48 ft.-lb. (65 N•m)	19 ft.-lb. (26 N•m)	26 ft.-lb. (35 N•m)
7/16	27 ft.-lb. (37 N•m)	35 ft.-lb. (47 N•m)	42 ft.-lb. (57 N•m)	54 ft.-lb. (73 N•m)	59 ft.-lb. (80 N•m)	77 ft.-lb. (104 N•m)	30 ft.-lb. (41 N•m)	42 ft.-lb. (57 N•m)
1/2	42 ft.-lb. (57 N•m)	54 ft.-lb. (73 N•m)	64 ft.-lb. (87 N•m)	83 ft.-lb. (113 N•m)	91 ft.-lb. (123 N•m)	117 ft.-lb. (159 N•m)	45 ft.-lb. (61 N•m)	64 ft.-lb. (88 N•m)
9/16	60 ft.-lb. (81 N•m)	77 ft.-lb. (104 N•m)	92 ft.-lb. (125 N•m)	120 ft.-lb. (163 N•m)	130 ft.-lb. (176 N•m)	169 ft.-lb. (229 N•m)	65 ft.-lb. (88 N•m)	92 ft.-lb. (125 N•m)
5/8	83 ft.-lb. (112 N•m)	107 ft.-lb. (145 N•m)	128 ft.-lb. (174 N•m)	165 ft.-lb. (224 N•m)	180 ft.-lb. (244 N•m)	233 ft.-lb. (316 N•m)	90 ft.-lb. (122 N•m)	127 ft.-lb. (172 N•m)
3/4	146 ft.-lb. (198 N•m)	189 ft.-lb. (256 N•m)	226 ft.-lb. (306 N•m)	293 ft.-lb. (397 N•m)	319 ft.-lb. (432 N•m)	413 ft.-lb. (560 N•m)	160 ft.-lb. (217 N•m)	226 ft.-lb. (306 N•m)
7/8	142 ft.-lb. (193 N•m)	183 ft.-lb. (248 N•m)	365 ft.-lb. (495 N•m)	473 ft.-lb. (641 N•m)	515 ft.-lb. (698 N•m)	667 ft.-lb. (904 N•m)	258 ft.-lb. (350 N•m)	364 ft.-lb. (494 N•m)
1	213 ft.-lb. (289 N•m)	275 ft.-lb. (373 N•m)	547 ft.-lb. (742 N•m)	708 ft.-lb. (960 N•m)	773 ft.-lb. (1048 N•m)	1000 ft.-lb. (1356 N•m)	386 ft.-lb. (523 N•m)	545 ft.-lb. (739 N•m)



Appendix

Torque Specifications (Cont'd)

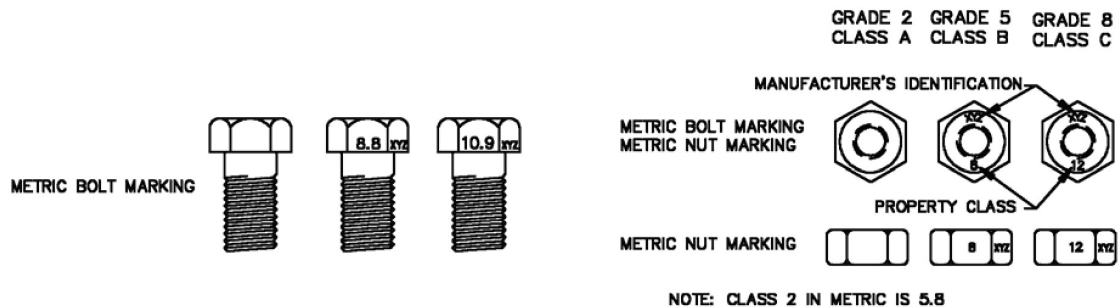
Metric Hardware and Lock Nuts

TORQUE CHARTS

Minimum Hardware Tightening Torques

Normal Assembly Applications
(Metric Hardware and Lock Nuts)

Nominal Size	Class 5,8		Class 8,8		Class 10,9		Lock nuts
	Unplated or Plated Silver	Plated W / ZnCr Gold	Unplated or Plated Silver	Plated W / ZnCr Gold	Unplated or Plated Silver	Plated W / ZnCr Gold	Class 8 W / CL. 8,8 Bolt
M4	1.7 N•m (15 in.-lb.)	2.2 N•m (19 in.-lb.)	2.6 N•m (23 in.-lb.)	3.4 N•m (30 in.-lb.)	3.7 N•m (33 in.-lb.)	4.8 N•m (42 in.-lb.)	1.8 N•m (16 in.-lb.)
M6	5.8 N•m (51 in.-lb.)	7.6 N•m (67 in.-lb.)	8.9 N•m (79 in.-lb.)	12 N•m (102 in.-lb.)	13 N•m (115 in.-lb.)	17 N•m (150 in.-lb.)	6.3 N•m (56 in.-lb.)
M8	14 N•m (124 in.-lb.)	18 N•m (159 in.-lb.)	22 N•m (195 in.-lb.)	28 N•m (248 in.-lb.)	31 N•m (274 in.-lb.)	40 N•m (354 in.-lb.)	15 N•m (133 in.-lb.)
M10	28 N•m (21 ft.-lb.)	36 N•m (27 ft.-lb.)	43 N•m (32 ft.-lb.)	56 N•m (41 ft.-lb.)	61 N•m (45 ft.-lb.)	79 N•m (58 ft.-lb.)	30 N•m (22 ft.-lb.)
M12	49 N•m (36 ft.-lb.)	63 N•m (46 ft.-lb.)	75 N•m (55 ft.-lb.)	97 N•m (72 ft.-lb.)	107 N•m (79 ft.-lb.)	138 N•m (102 ft.-lb.)	53 N•m (39 ft.-lb.)
M16	121 N•m (89 ft.-lb.)	158 N•m (117 ft.-lb.)	186 N•m (137 ft.-lb.)	240 N•m (177 ft.-lb.)	266 N•m (196 ft.-lb.)	344 N•m (254 ft.-lb.)	131 N•m (97 ft.-lb.)
M20	237 N•m (175 ft.-lb.)	307 N•m (226 ft.-lb.)	375 N•m (277 ft.-lb.)	485 N•m (358 ft.-lb.)	519 N•m (383 ft.-lb.)	671 N•m (495 ft.-lb.)	265 N•m (195 ft.-lb.)
M24	411 N•m (303 ft.-lb.)	531 N•m (392 ft.-lb.)	648 N•m (478 ft.-lb.)	839 N•m (619 ft.-lb.)	897 N•m (662 ft.-lb.)	1160 N•m (855 ft.-lb.)	458 N•m (338 ft.-lb.)





www.loftness.com

Loftness Specialized Equipment, Inc.
650 So. Main Street • PO Box 337 • Hector, MN 55342
Tel: 320.848.6266 • Fax: 320.848.6269 • Toll Free: 1.800.828.7624

Printed in USA
© Loftness 2025