

» AUXILIARY HYDRAULIC COOLER

LOFTNESS 

COOL FLOW™



Proudly American.



Explore all
Features



BEAT THE HEAT

Heat is the worst enemy of hydraulic systems. Unfortunately, it comes with the territory in vegetation management and other demanding applications. That's why we developed the Cool Flow™. It provides extra cooling for the hydraulic oil to help prevent heat-related downtime and equipment damage.



STAYING POWER

ROOF MOUNTED DESIGN

The Cool Flow mounts permanently to the roof of the power unit, so it stays with you wherever you go. It can be used across all attachments with no extra wires and no extra steps. Just hook and unhook attachments normally.



REVERSE ENGINEERED

What happens if hydraulic flow is reversed? Nothing. We engineered the unit to allow full hydraulic flow to the attachment from either direction without issue. This provides flexibility for multiple attachment styles. It also protects the cooler from damage if hoses are accidentally reversed or a coupler becomes detached.



THE COOLEST HYDRAULIC COOLER YOU'LL FIND

There's no better way to keep your hydraulic system running smoothly than the Loftness Cool Flow. That's because it offers industry-leading cooling performance — up to 150,000 BTUs per hour. It helps you run longer and push your equipment harder than before with less risk of costly damage from overheating.

PLAYS WELL WITH OTHERS

The Cool Flow isn't just for skid steers. Its versatile design also works well on backhoes and front-end loaders. It is compatible with many hydraulic systems ranging from 10 to 60 GPM, and mounting kits are available for various makes and models of equipment.

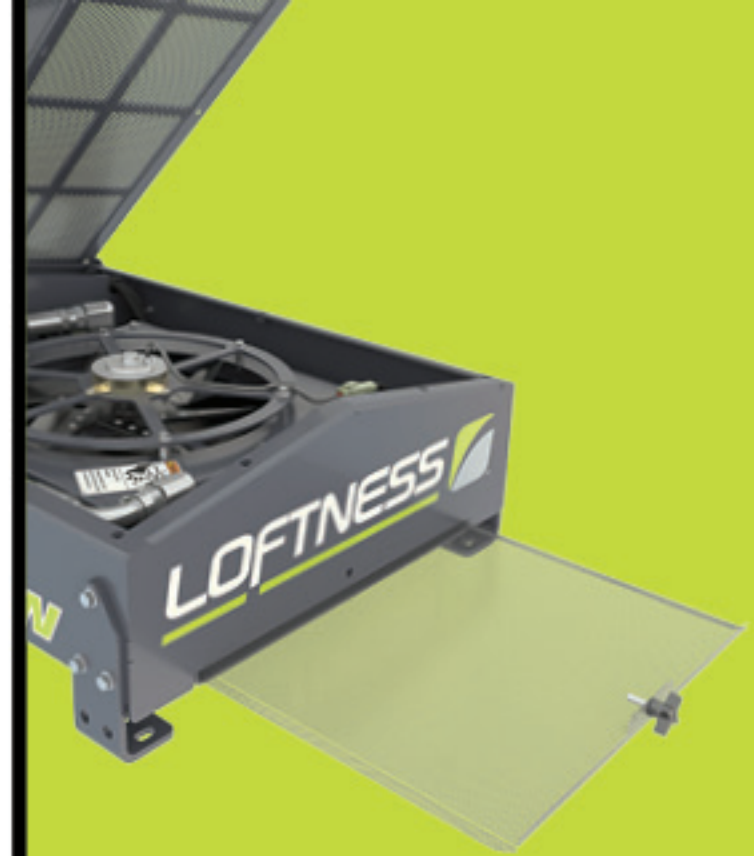


TWIN FAN

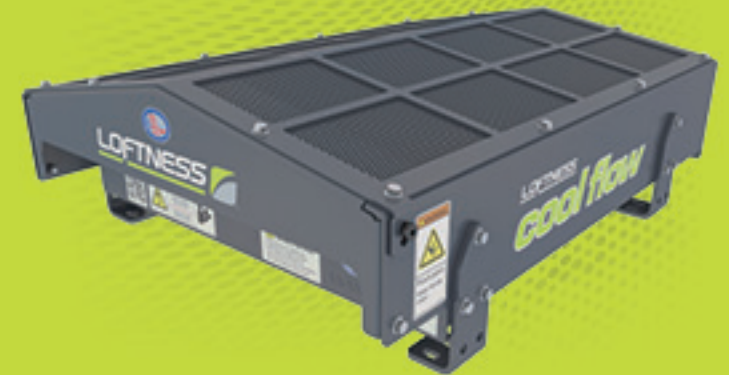
The original Cool Flow model has two 14-inch-diameter fans that provide maximum cooling performance on the largest power units. It leads the industry with up to 150,000 BTUs per hour.

SINGLE FAN

Our compact model, featuring a single 16-inch-diameter fan, is ideal for use on mid-frame skid steers. It provides up to 95,000 BTUs per hour of cooling capacity.



» We've **simplified maintenance** on the Cool Flow. The bottom screen slides out for debris removal, and the protective top screen can be easily removed.



» A **low profile design** minimizes the risk of hitting overhead obstructions.

SPECIFICATIONS

Model	Twin-Fan (15CFISUV6)	Single-Fan (95CFISUV5)
Flow Capacity	38-60 GPM	10-37.9 GPM
Core Construction	Aluminum Brazed	Aluminum Brazed
Cooling Fan Size	(2) 14 inch Diameter	16 inch Diameter
Cooling Capacity	150,000 BTU/hour	95,000 BTU/hour
Width	34 inches (86.4 cm)	29.50 inches (75 cm)
Length	44 inches (112 cm)	36.75 inches (94 cm)
Height	14 inches (35.6 cm)	12.75 inches (34 cm)
Weight	350 lbs (158.8 kg)	223 lbs (101.2 kg)

» The Cool Flow is built tough with a **heavy-duty frame and premium screens** to protect against damage.

» A **cold weather bypass** feature helps the power unit start easier on chilly mornings.

» An **aluminum brazed core** helps the Cool Flow achieve maximum performance.

DURABILITY RUNS DEEP WITH OUR FULL LINE OF EQUIPMENT



**MULCHING HEADS » BRUSH CUTTERS » DISC MULCHERS » FLAIL MOWERS
STUMP GRINDERS » HYDRAULIC COOLERS » MECHANICAL TRIMMERS**



BUILD & PRICE TOOL

Like what you see? Start customizing your own Bad Ax® with our online tool.



FIND A DEALER



Prefer to talk to a local expert? Find your nearest Loftness dealer and get straight answers.

Proudly American. Employee Owned.

At Loftness, we're proud of the products we make at our local manufacturing facility in Hector, Minnesota. And we take things personally when it comes to providing customers with the most durable, highest performing equipment that's backed by the best customer support. That's because we're 100% employee-owned, so every single one of us has a stake in your success.



Loftness Specialized Equipment
650 Main Street South • Hector, Minnesota 55342 USA
US & Canada: 800-828-7624 | International 320-848-6266
info@loftness.com | www.loftness.com