

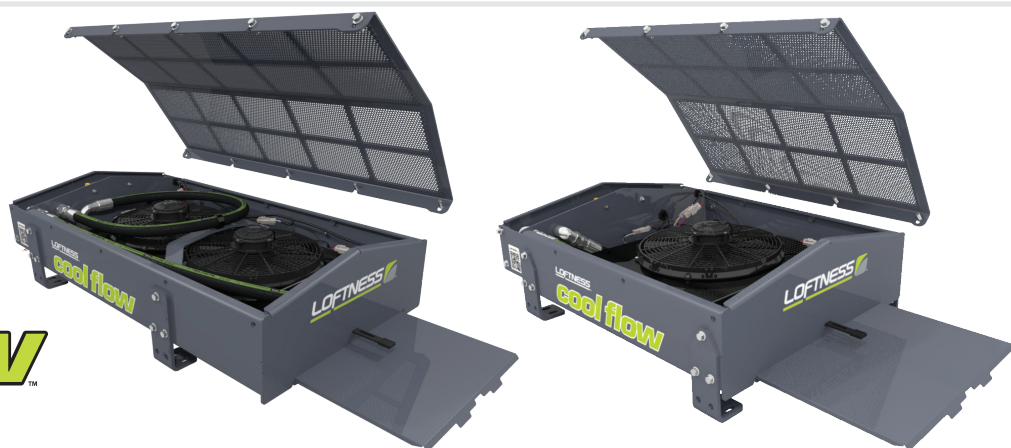
# COOL FLOW

## AUXILIARY HYDRAULIC COOLER

**LOFTNESS**  
AN EMPLOYEE-OWNED COMPANY

**cool flow**

Auxiliary Hydraulic Cooler



## FEATURES

### Auxiliary Hydraulic **Oil Cooler** for Skid Steers

- **Single-Fan Model Includes 16-Inch-Diameter Cooling Fan** and **95,000 BTUs/Hr.** Capacity for Mid-Frame Skid Steers
- **Twin-Fan Model Includes Two 14-Inch-Diameter Cooling Fans** and Industry-Leading **150,000 BTUs/Hr.** Capacity
- 12 Volt Heavy-Duty Fan Speed Controller
- Rugged Roof-Mounted Design
- Automatic Thermostatically Controlled On/Off Switch
- **Easy-Cleaning** Screens
- Built-In By-Pass Protection Allows Reverse Hyd. Flow
- Aluminum Brazed Core
- Continuous Cooling of Entire Hydraulic System
- Less Vibration & Back Pressure Than Head-Mounted
- 10-60 GPM Flow Capacity
- Stays on Skid-Steer for Use With Any Attachment
- Cold Weather By-Pass for Start-Up
- **Heavy-Duty Construction** & Screens

#### GENERAL COOLER INSTALLATION INFO

- The Loftness cooler and protective box are designed to be used where more hydraulic cooling is needed in mobile equipment.
- The oil cooler consists of the oil cooler/protective box, oil cooler core, electric fan(s), fan controller, by-pass check valve, temperature sensor, wire harness, inlet and outlet ports, slide-out screen, removable top and mounting feet.
- The oil cooler draws air in from the bottom and blows it out the top.
- Generally, the cab roof is the best place to mount the cooler. Alternative locations might be behind the operator's cab or on top of a forestry package where the unit is shielded.
- Hydraulic hoses are not included. Hydraulic adapters to make the hydraulic connections to your machine are not included. Power unit designs vary, which make the fittings and hoses unique to each machine type.
- Generally, the auxiliary cooler is plumbed into the existing hydraulic system in series with the existing cooler. There are two main hoses needed to reach from the auxiliary cooler to the existing cooler, along with various adapter fittings. The recommended plumbing procedures are given in more detail in the operator's manual.
- We also recommend that you check with the manufacturer of your power unit regarding mounting and plumbing procedures.

Detailed instructions for installing the oil cooler can be found at: [www.loftness.com/manuals](http://www.loftness.com/manuals)  
Instructions can also be transmitted by email or fax free of charge.

**(800)828-7624 / (320)848-6266**

**LOFTNESS.COM**

**BUILD  
& PRICE**

650 South Main Street | Hector, MN 55342



SPECS		Single Fan	Twin Fan
	Cooling Capacity	95,000 BTU/Hour	150,000 BTU/Hour
	Max Inlet Pressure	250 PSI	
	Max Inlet Flow	10-37.9 GPM	38-60 GPM
	Electrical System	12 Volt DC	
	Dimensions (Width x Length x Height)	29.5" x 36.75" x 12.75"	34" x 44" x 14"
	Weight	223 lbs	334 lbs
	Inlet & Outlet Port	16 Male JIC	
		60 PSI By-Pass Check Valve (For Cold Start-up)	

GROUP	Circle/select 1 item from each group in the proper size/model column and product code column. →		PRODUCT CODE	
MODEL				
1	Generic Cooler Kit* (Single Fan)	95CFISUV4	\$5,604	
	Generic Cooler Kit* (Twin Fan)	15CFISUV6		\$7,994
Mount				
2	Takeuchi Mount - TL12-V2/R2	201883	N/A	\$650
	Kubota Mount - SVL97-3	215886	N/A	\$900
	Kubota Mount - SVL75/90/95/97-2	212512	\$900	\$900
	Kubota Mount - SVL75-3	212431	\$900	N/A
	John Deere Mount – 325G / 331G / 333G (For Serial # 307152 and Up)	212610	N/A	\$950
	John Deere Mount – 333P / 335P	215705	N/A	\$1,000
	Adjustable Leg Kit	206362	\$250	\$250
Hose Kits				
3	Takeuchi Hose Kit - TL12-V2/R2	N49247	N/A	\$270
	Kubota Hose Kit - SVL97-3	215888	N/A	\$575
	Kubota Hose Kit - SVL95/97-2	N49253	N/A	\$575
	Kubota Hose Kit - SVL75-3	212609	\$450	N/A
	John Deere Hose Kit – 331G / 333G (For Serial # 307152 and Up)	209047	N/A	\$550
	John Deere Hose Kit – 333P / 335P	215715	N/A	\$600

PRODUCT CODE

GROUP

1

2

3

\$

TOTAL LIST PRICE

\*Generic Cooler Kits include cooler, protective box and generic mounting feet. Model specific mounting hardware/brackets or hoses are not included with generic kit. Various hoses and adapter fittings will be needed to install and are NOT included. Some welding or drilling may be required. See operator's manual for more install information or call the factory.

(800)828-7624 / (320)848-6266

LOFTNESS.COM

BUILD  
& PRICE

USD - FOB Factory - Uncrated - Prices Effective 4/15/25 (Subject to Change)

650 South Main Street | Hector, MN 55342

L10042 - 7/9/25