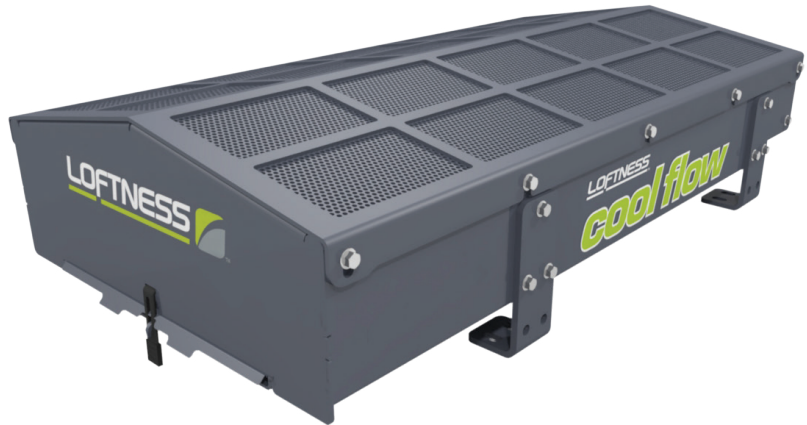


# COOL FLOW

AUXILIARY HYDRAULIC COOLER



**cool flow**  
Auxiliary Hydraulic Cooler

## FEATURES

### 140,000 BTU Auxiliary Hydraulic **Oil Cooler** for Skid Steers

- NEW 140,000 BTUs/Hr. Capacity
- 12 Volt Heavy-Duty Fan Speed Controller
- Rugged Roof-Mounted Design
- Automatic Thermostatically Controlled On/Off Switch
- **Easy-Cleaning** Screens
- Built-In By-Pass Protection Allows Reverse Hyd. Flow
- Aluminum Brazed Core
- Continuous Cooling of Entire Hydraulic System
- Two 14-Inch Diameter Cooling Fans
- Less Vibration & Back Pressure Than Head-Mounted
- 10-45 GPM Flow Capacity
- Stays on Skid-Steer for Use With Any Attachment
- Cold Weather By-Pass for Start-Up
- **Heavy-Duty Construction** & Screens

#### GENERAL COOLER INSTALLATION INFO

- The Loftness cooler and protective box are designed to be used where more hydraulic cooling is needed in mobile equipment.
- The oil cooler consists of the oil cooler/protective box, oil cooler core, electric fans, fan controller, by-pass check valve, temperature sensor, wire harness, inlet and outlet ports, slide-out screen, removable top and mounting feet.
- The oil cooler draws air in from the bottom and blows it out the top.
- Generally, the cab roof is the best place to mount the cooler. Alternative locations might be behind the operator's cab or on top of a forestry package where the unit is shielded.
- Hydraulic hoses are not included. Hydraulic adapters to make the hydraulic connections to your machine are not included. Power unit designs vary, which make the fittings and hoses unique to each machine type.
- Generally, the auxiliary cooler is plumbed into the existing hydraulic system in series with the existing cooler. There are two main hoses needed to reach from the auxiliary cooler to the existing cooler, along with various adapter fittings. The recommended plumbing procedures are given in more detail in the operator's manual.
- We also recommend that you check with the manufacturer of your power unit regarding mounting and plumbing procedures.

Detailed instructions for installing the oil cooler can be found at: [www.loftness.com/manuals](http://www.loftness.com/manuals)  
Instructions can also be transmitted by email or fax free of charge.

**(800)828-7624 / (320)848-6266**

**LOFTNESS.COM**

**BUILD  
& PRICE**

650 South Main Street | Hector, MN 55342



<b>SPECS</b>	377 PSI Max Inlet Pressure	Inlet Port: -16 Male JIC
	45 GPM Max Inlet Flow	Outlet Port: -16 Male JIC
	12 Volt DC Electrical System	10 PSI Pressure Drop @ 45 GPM
	26" W x 46.5" L x 12.5" H	60 PSI By-Pass Check Valve (For Cold Start-up)
	Weighs 253 lbs.	

GROUP	Circle/select 1 item from each group in the proper size/model column and product code column. →		PRODUCT CODE	
<b>1</b>	<b>MODEL</b>			
	Generic Cooler Kit*		<b>14CFISUV3</b>	\$5,981
<b>2</b>	<b>Mount</b>			
	Takeuchi Mount - TL250/12		<b>N40335</b>	\$300
	Takeuchi Mount - TL12-V2/R2		<b>201883</b>	\$470
	Kubota Mount - SVL75/90/95/97		<b>201880</b>	\$470
	John Deere Mount – 325G / 331G / 333G (For Serial # 307152 and Up)		<b>206860</b>	\$540
	Adjustable Leg Kit		<b>206362</b>	\$150
<b>3</b>	<b>Hose Kits</b>			
	Takeuchi Hose Kit - TL12-V2/R2		<b>N49247</b>	\$250
	Kubota Hose Kit - SVL95/97		<b>N49253</b>	\$360
	John Deere Hose Kit – 331G / 333G (For Serial # 307152 and Up)		<b>209047</b>	\$430

<b>PRODUCT CODE</b>		»		»		<b>\$</b>	
	<b>GROUP</b>	<b>1</b>		<b>2</b>			<b>3</b>

\*Generic Cooler Kits include cooler, protective box and generic mounting feet. Model specific mounting hardware/brackets or hoses are not included with generic kit. Various hoses and adapter fittings will be needed to install and are NOT included. Some welding or drilling may be required. See operator's manual for more install information or call the factory.

